



MYL6 Polyclonal Antibody

Catalog No	YP-Ab-03159
Isotype	IgG
Reactivity	Human;Mouse;Rat
Applications	WB;IHC
Gene Name	MYL6
Protein Name	Myosin light polypeptide 6
Immunogen	Synthesized peptide derived from the Internal region of human MYL6.
Specificity	MYL6 Polyclonal Antibody detects endogenous levels of MYL6 protein.
Formulation	Liquid in PBS containing 50% glycerol, 0.5% BSA and 0.02% sodium azide.
Source	Polyclonal, Rabbit,IgG
Purification	The antibody was affinity-purified from rabbit antiserum by affinity-chromatography using epitope-specific immunogen.
Dilution	WB 1:500-2000;IHC-p 1:50-300
Concentration	1 mg/ml
Purity	≥90%
Storage Stability	-20°C/1 year
Synonyms	MYL6; Myosin light polypeptide 6; 17 kDa myosin light chain; LC17; Myosin light chain 3; MLC-3; Myosin light chain alkali 3; Myosin light chain A3; Smooth muscle and nonmuscle myosin light chain alkali 6
Observed Band	17kD
Cell Pathway	cytosol,brush border,membrane,myosin complex,unconventional myosin complex,extracellular matrix,vesicle,extracellular exosome,
Tissue Specificity	B-cell lymphoma,Brain,Duodenum,Eye,Lung,Placenta,
Function	function:Regulatory light chain of myosin. Does not bind calcium.,similarity:Contains 3 EF-hand domains.,subunit:Myosin is an hexamer of 2 heavy chains and 4 light chains.,
Background	Myosin is a hexameric ATPase cellular motor protein. It is composed of two heavy chains, two nonphosphorylatable alkali light chains, and two phosphorylatable regulatory light chains. This gene encodes a myosin alkali light chain that is expressed in smooth muscle and non-muscle tissues. Genomic sequences representing several pseudogenes have been described and two transcript variants encoding different isoforms have been identified for this gene. [provided by RefSeq, Jul 2008],



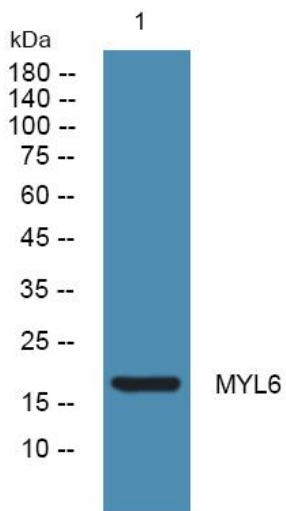
matters needing attention

Avoid repeated freezing and thawing!

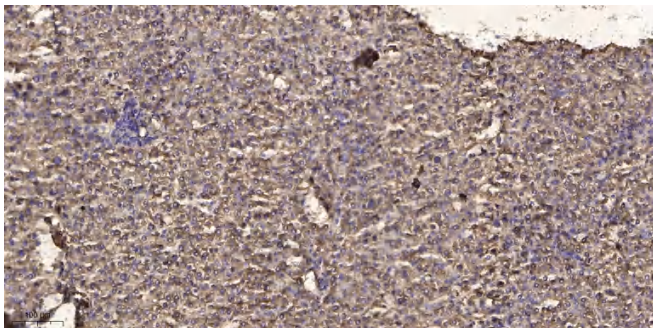
Usage suggestions

This product can be used in immunological reaction related experiments. For more information, please consult technical personnel.

Products Images



Western blot analysis of lysates from Jarkat cells, primary antibody was diluted at 1:1000, 4° over night



Immunohistochemical analysis of paraffin-embedded human liver cancer. 1, Antibody was diluted at 1:200(4° overnight). 2, Tris-EDTA,pH9.0 was used for antigen retrieval. 3,Secondary antibody was diluted at 1:200(room temperature, 45min).